



# GAT MONTHLY MEMBERSHIP PROGRESS REPORT

Results as of: 5/31/2023

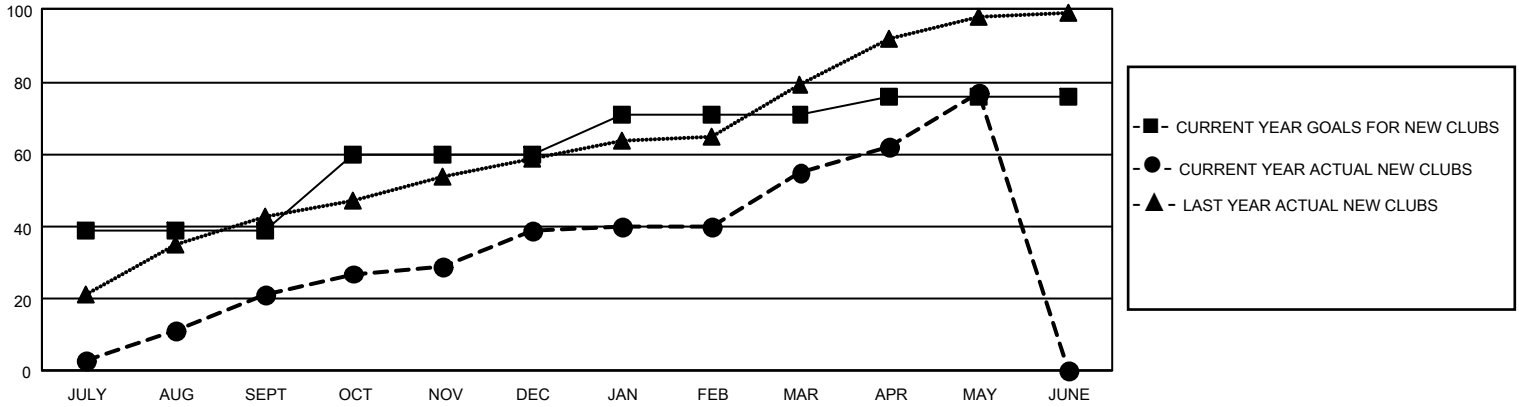
## GMT Constitutional Area 6, Group C

REPORT DOES NOT INCLUDE CLUBS IN UNDISTRICTED AREAS.

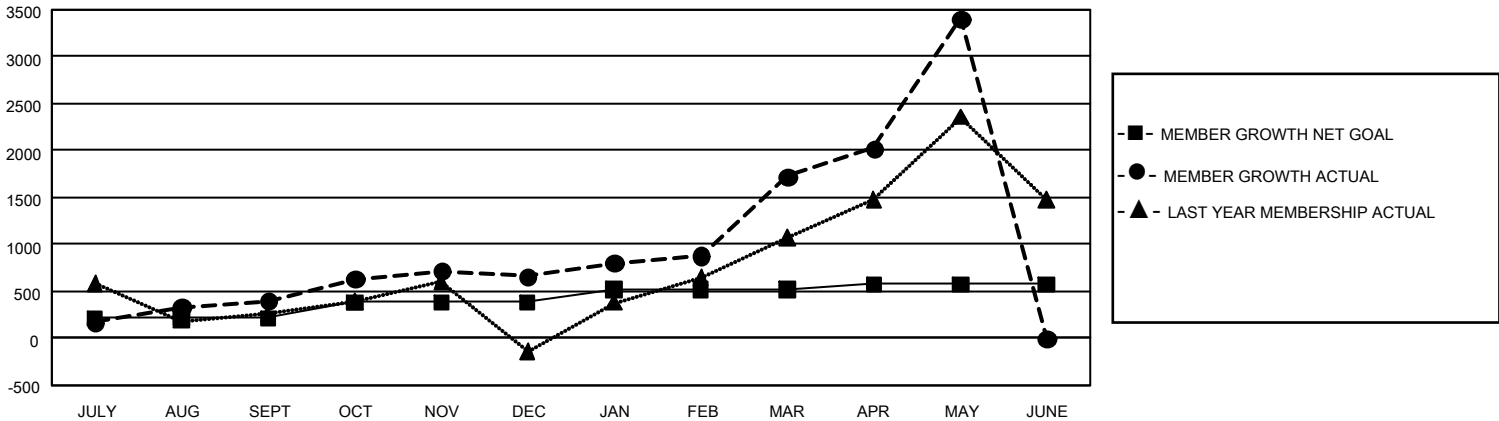
Clubs			
RESULTS FOR 2022-2023			
QUARTER	NEW CLUB GOAL	NEW CLUBS	DROPPED CLUBS
JULY/AUG/SEPT	117	21	1
OCT/NOV/DEC	63	18	12
JAN/FEB/MAR	33	16	1
APR/MAY/JUNE	15	22	0

Members			
RESULTS FOR 2022-2023			
QUARTER	MEMBER GROWTH NET GOAL	MEMBER GROWTH ACTUAL	DROPPED MEMBERS ACTUAL (including transfers)
JULY/AUG/SEPT	209	1,043	555
OCT/NOV/DEC	173	859	561
JAN/FEB/MAR	139	1,503	296
APR/MAY/JUNE	53	2,494	532

GOALS AND ACTUAL NEW CLUBS CUMULATIVE



GOALS AND ACTUAL MEMBERS CUMULATIVE



DROPPED CLUBS: 14	537 CLUBS OF 779 ADDED 1 OR MORE NEW MEMBERS	<u>GENDER DISTRIBUTION</u>	
<u>DROPPED MEMBERS</u>		MALE	17,978 (76.99%)
DECEASED	36	FEMALE	5,368 (22.99%)
CLUB CANCELLED	258	NON BINARY	0 (0.00%)
OTHER	1,649	PREFER NOT TO ANSWER	4 (0.02%)
TOTAL	1,943	TOTAL FAMILY UNIT MEMBERS	11,162
	<a href="#">CLICK HERE FOR CUMULATIVE MEMBERSHIP DATA</a>	FAMILY MEMBERS PAYING HALF DUES	7,871